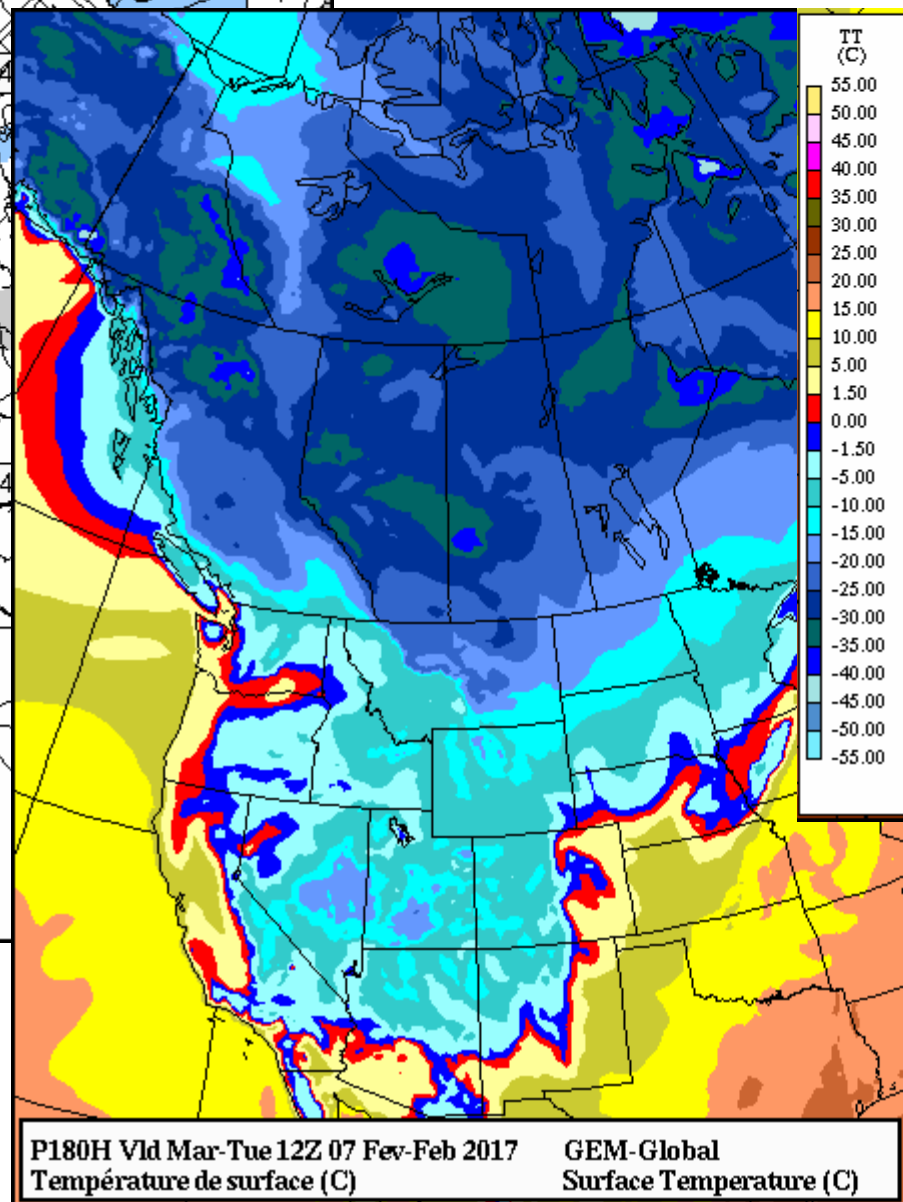
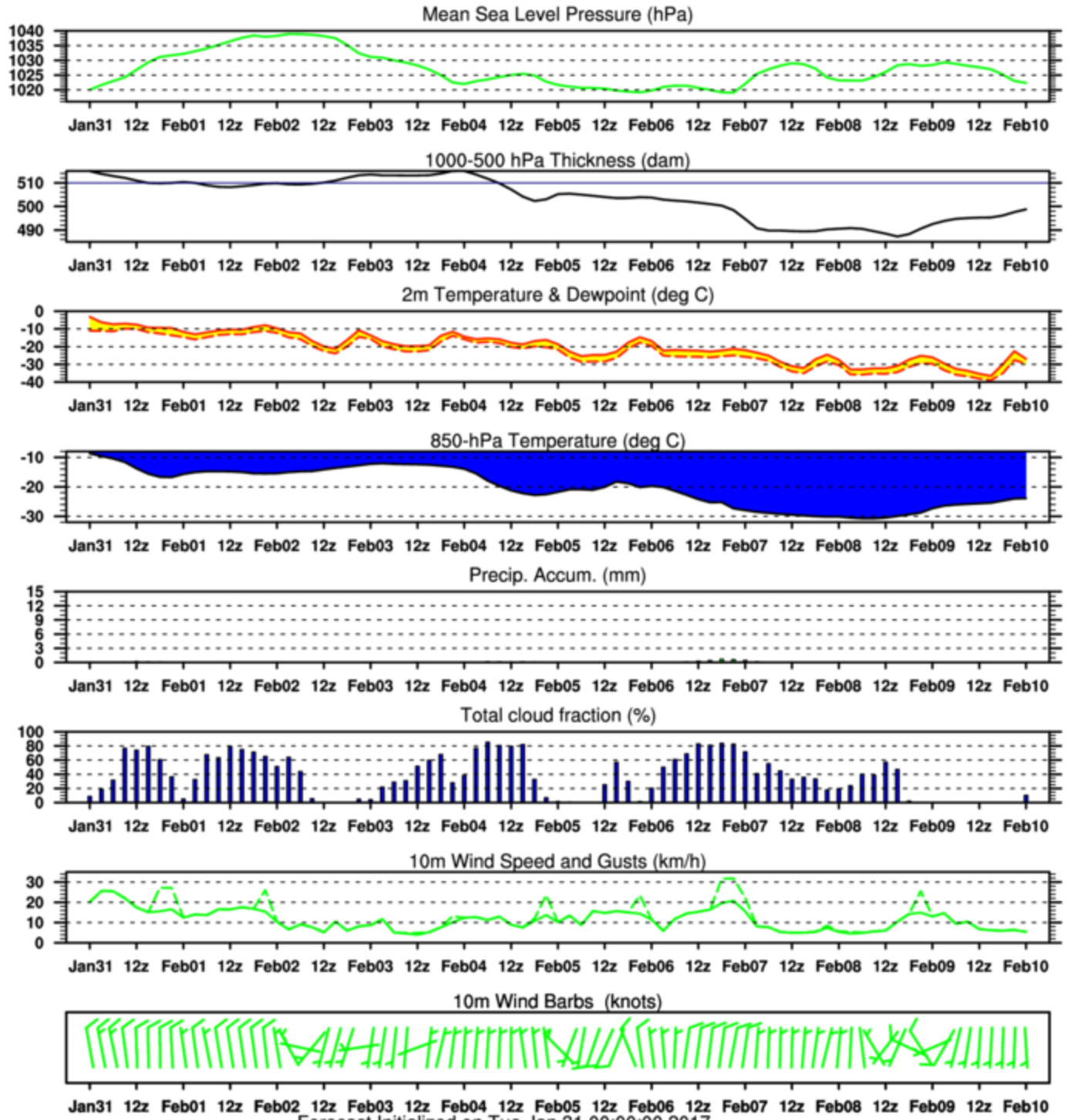


On Tuesday 31 Jan. we looked at this 7.5 day prog... here, we'll look at "younger" progs, and with this morning's actual state

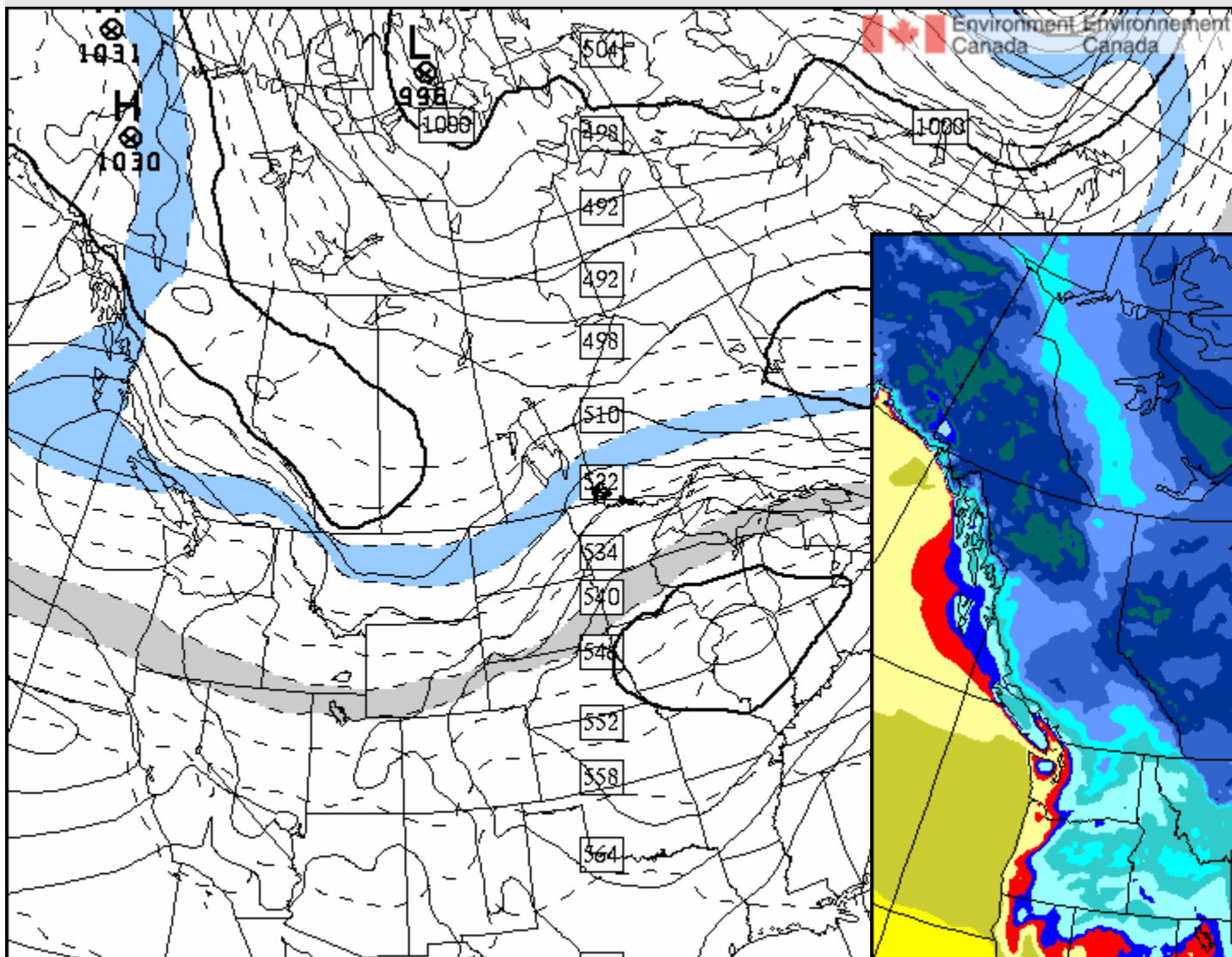


- patches of -30° to -35°C in C. Alberta

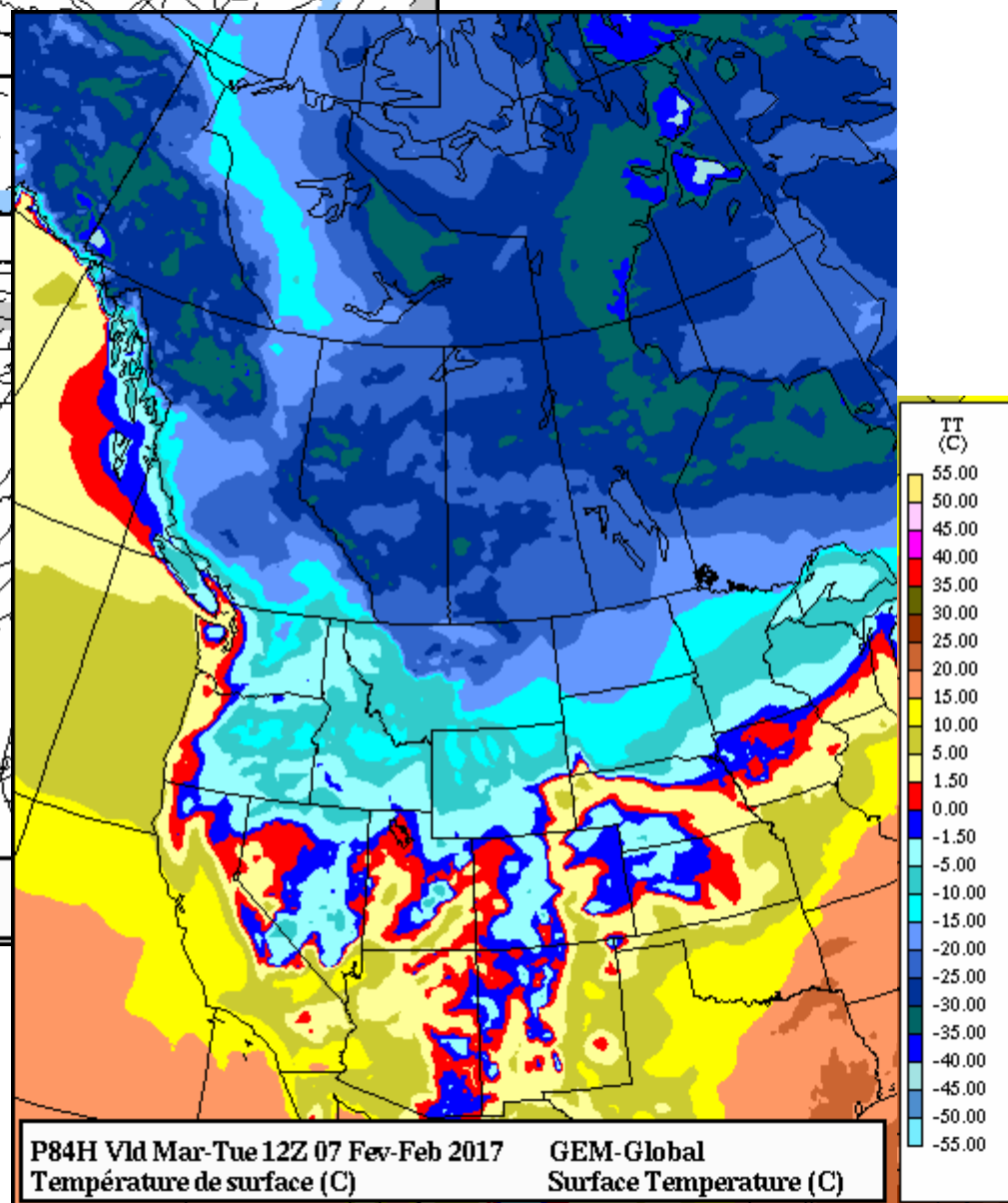


Forecast Initialized on Tue Jan 31 00:00:00 2017
 CMC-GDPS for the City of Edmonton - <http://meteocentre.com/>

GEM RDPS 84h forecast initialized 00Z Sat 4 Feb. valid 12Z Tues 7 February 2017

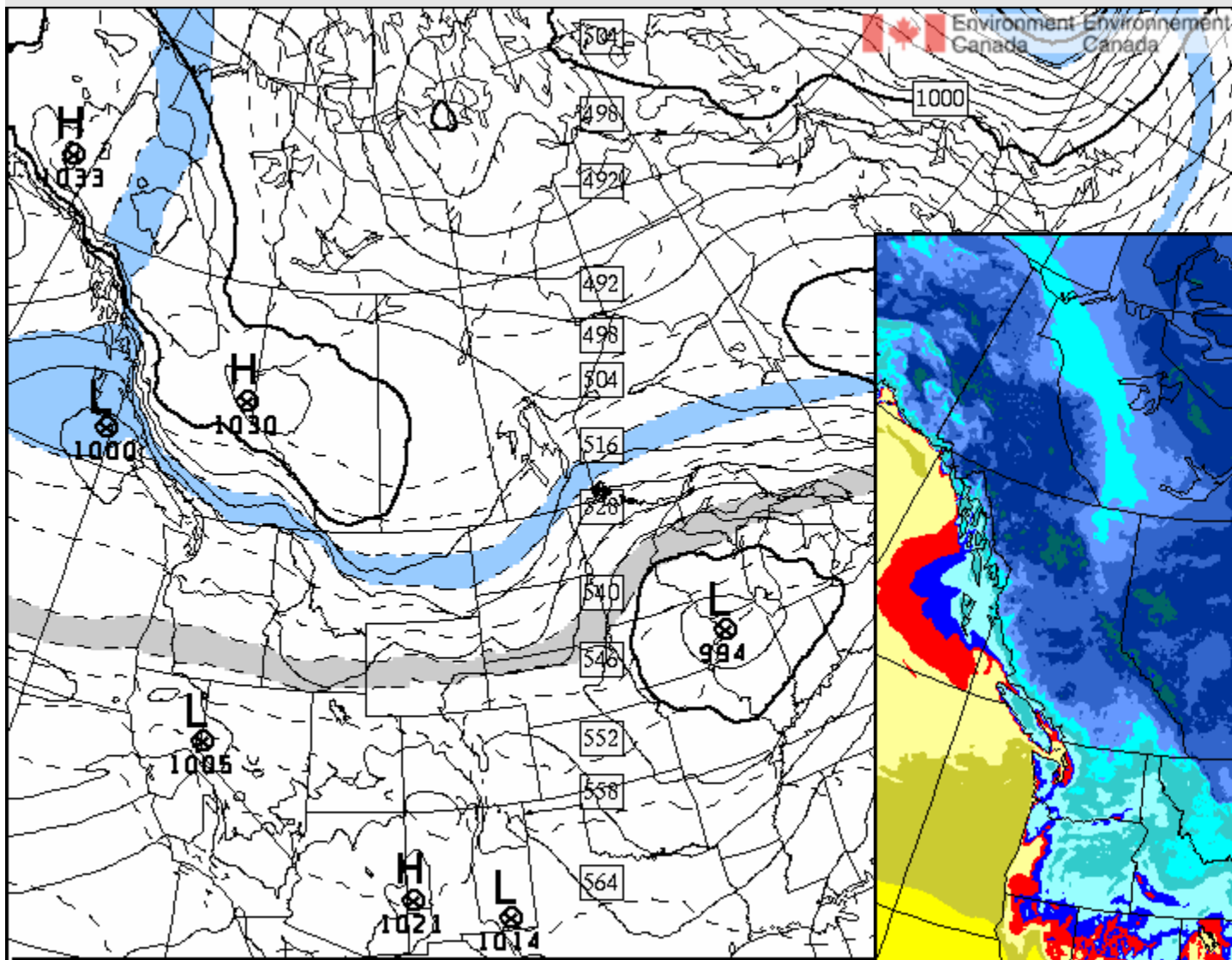


P84H Vld Mar-Tue 12Z 07 Feb-Feb 2017 GEM-Global
CONTINU PNM (hPa) & 1000-500 DZ SOLID MSLP (hPa) & 1000-500 DZ

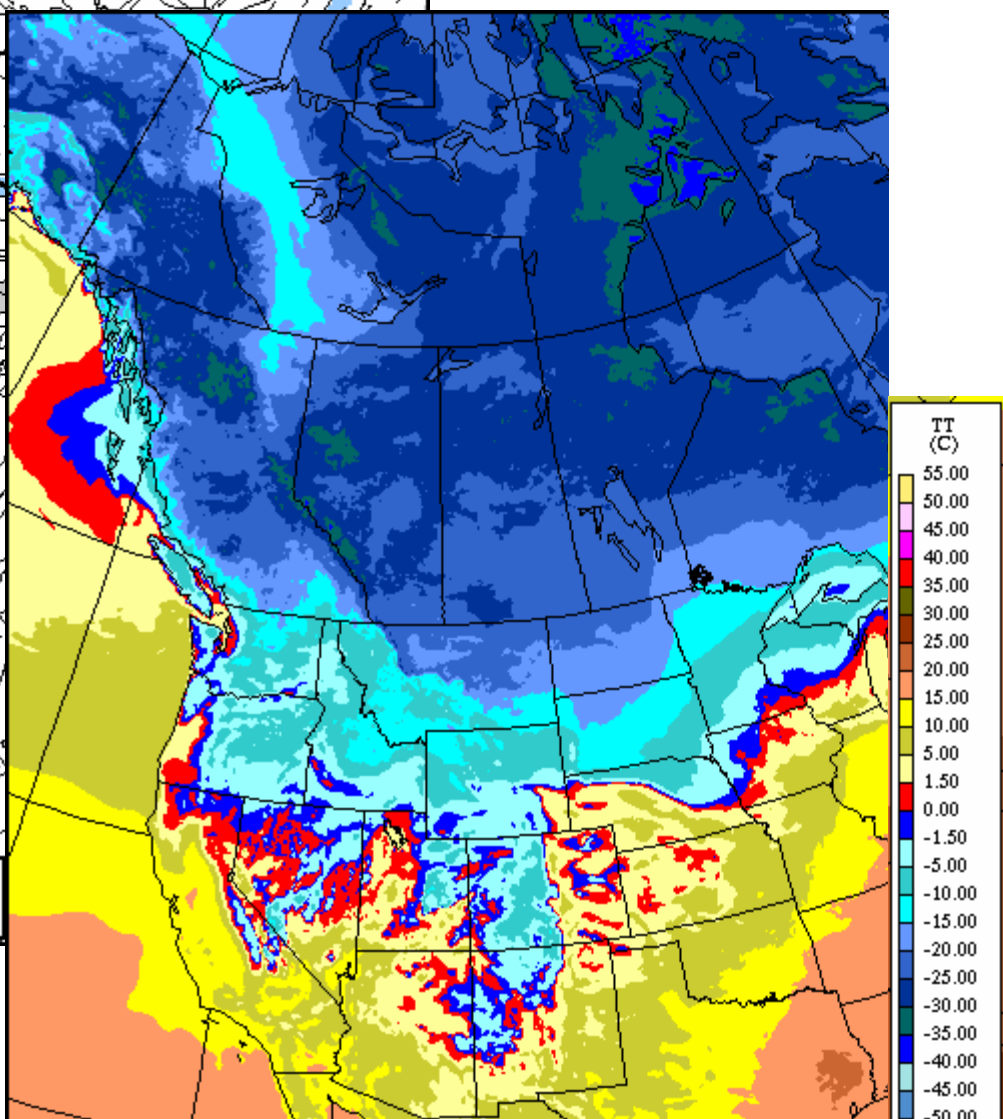


P84H Vld Mar-Tue 12Z 07 Feb-Feb 2017 GEM-Global
Température de surface (C) Surface Temperature (C)

GEM RDPS 48h forecast initialized 12Z Sun 5 Feb. valid 12Z Tues 7 February 2017



P48H Vld Mar-Tue 12Z 07 Feb-Feb 2017 SRPD/RDPS
 CONTINU PNM (hPa) & 1000-500 DZ SOLID MSLP (hPa) & 1000-500 DZ



P48H Vld Mar-Tue 12Z 07 Feb-Feb 2017 SRPD/RDPS
 Température de surface (C) Surface Temperature (C)

Observed conditions around 12Z Tues 7 February 2017...

CYEG 071200Z 23006KT 15SM SCT180 M31/M33 A3003 RMK AC4 SLP253

(the METAR is not entirely consistent with the web summary for 05 MST)

Edmonton Blatchford, Alberta

Latitude 53.57° N | Longitude 113.52° W










Past 24 Hour Conditions

Date / Time (MST)	Conditions	Temperature (°C)	Wind (km/h)
07 February 2017			
08:00	n/a	-27 (-27.0) ↓	SW 5
07:00	n/a	-26 (-25.7)	WSW 4
06:00	n/a	-25 (-25.0)	SW 8
05:00	n/a	-25 (-25.0)	WSW 4
04:00	n/a	-24 (-23.9)	WSW 3
03:00	n/a	-23 (-23.1)	WNW 5
02:00	n/a	-23 (-22.6)	WNW 8
01:00	n/a	-23 (-22.6)	WNW 8
00:00	n/a	-23 (-22.6)	WNW 8

Edmonton Int'l Airport, Alberta

Latitude 53.31° N | Longitude 113.58° W

Past 24 Hour Conditions

Date / Time (MST)	Conditions	Temperature (°C)	Wind (km/h)
07 February 2017			
08:00	 Ice Crystals	-31 (-30.5)	SW 11
07:00	 Ice Crystals	-29 (-29.4)	WSW 7
06:00	 Mainly Clear	-31 (-31.1)	W 6
05:00	 Partly Cloudy	-31 (-30.8)	WSW 6
04:00	 Light Snow	-28 (-27.6)	W 6
03:00	 Light Snow	-27 (-27.2)	WSW 6
02:00	 Light Snow	-27 (-27.0)	W 6
01:00	 Light Snow	-27 (-27.4)	WNW 7
00:00	 Light Snow	-27 (-27.3)	WNW 7

2017-02-07 08:00:00



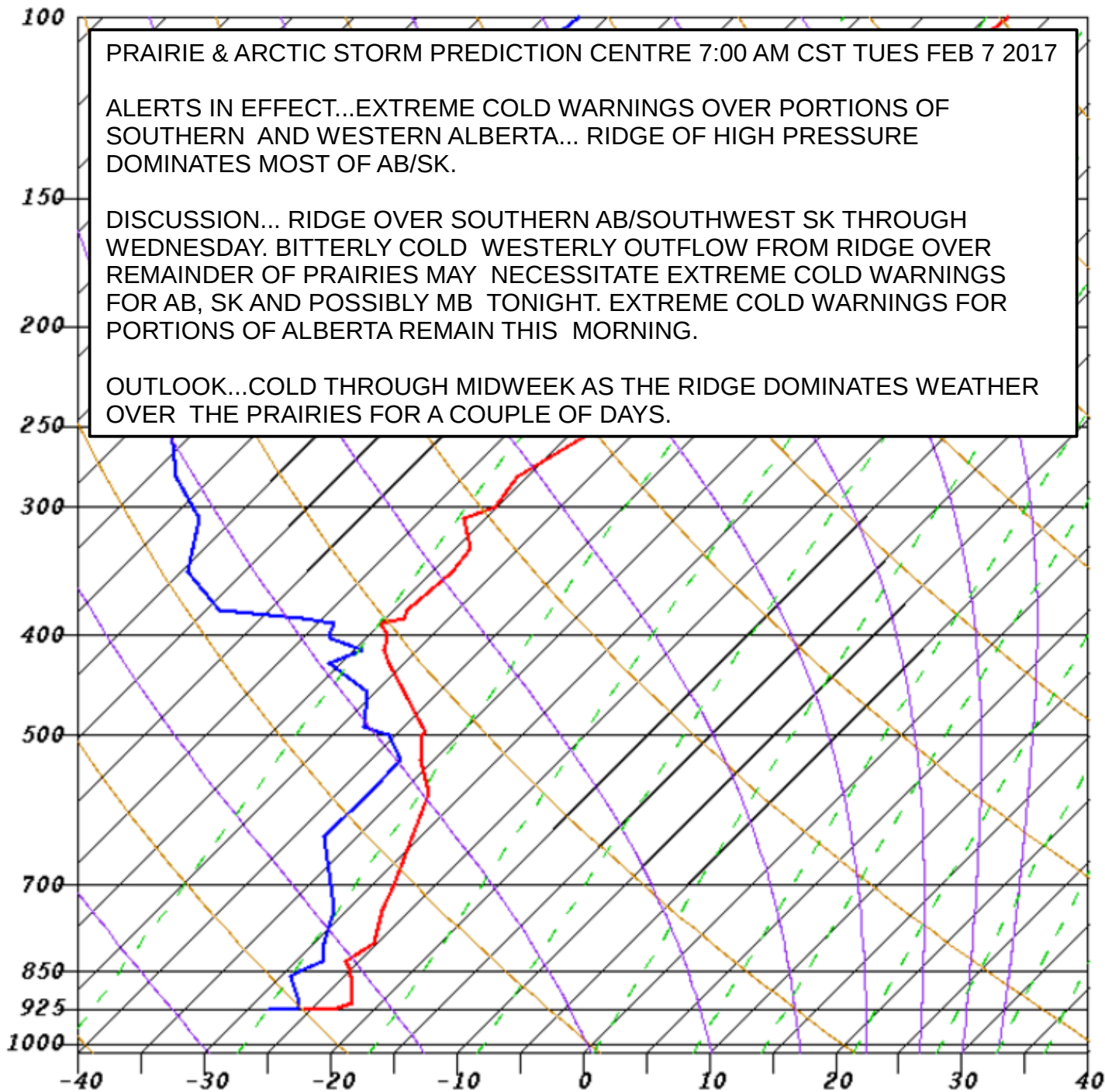
170207/1200 71119 HSE SHOW: 21 LIFT: 22 SWET: 33 VTOT: 13
 CAPE: 0 EQLV: -9999 SELV: 766 CINS: 0
 LCLT: 244 LCLP: 884

PRAIRIE & ARCTIC STORM PREDICTION CENTRE 7:00 AM CST TUES FEB 7 2017

ALERTS IN EFFECT...EXTREME COLD WARNINGS OVER PORTIONS OF SOUTHERN AND WESTERN ALBERTA... RIDGE OF HIGH PRESSURE DOMINATES MOST OF AB/SK.

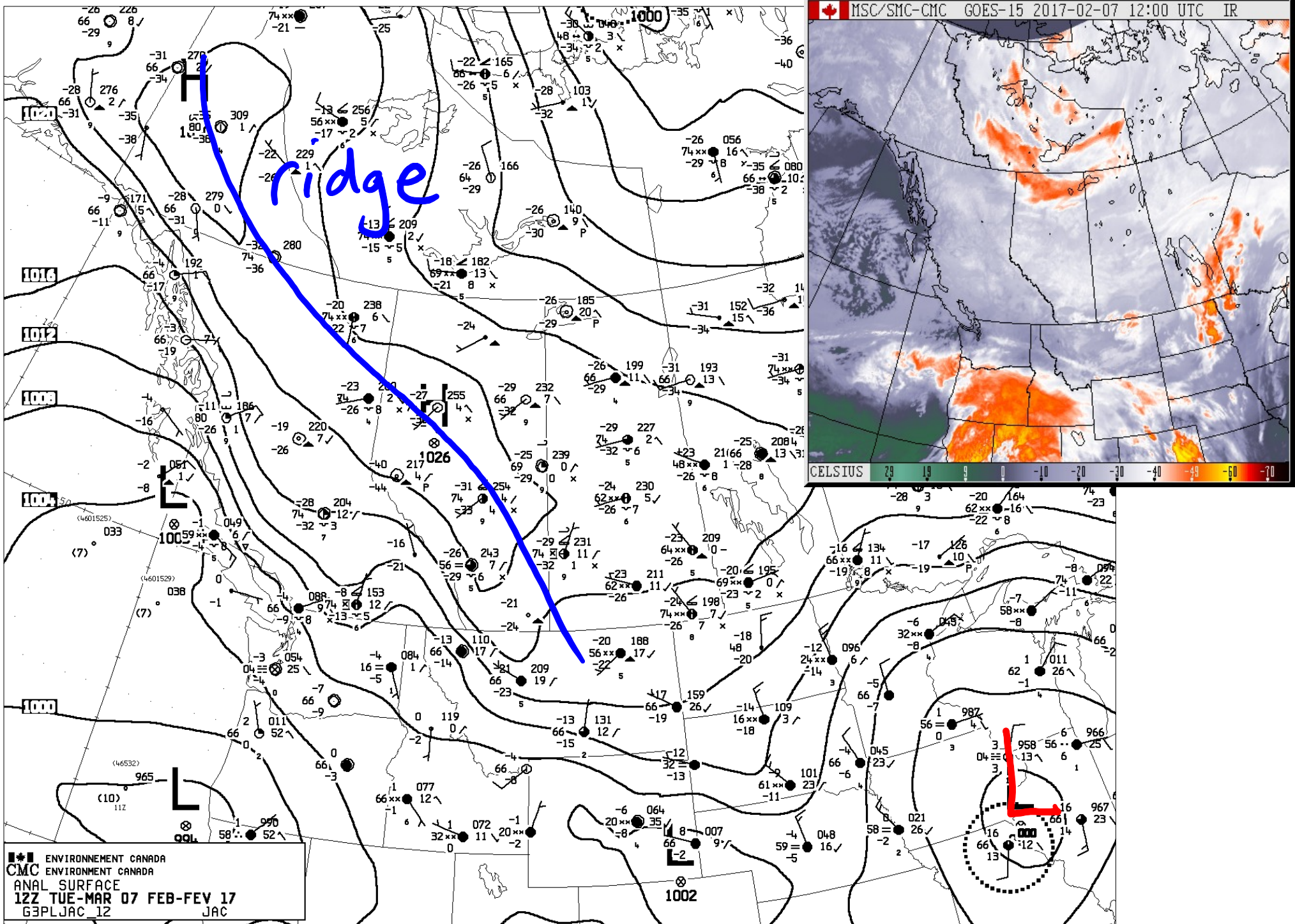
DISCUSSION... RIDGE OVER SOUTHERN AB/SOUTHWEST SK THROUGH WEDNESDAY. BITTERLY COLD WESTERLY OUTFLOW FROM RIDGE OVER REMAINDER OF PRAIRIES MAY NECESSITATE EXTREME COLD WARNINGS FOR AB, SK AND POSSIBLY MB TONIGHT. EXTREME COLD WARNINGS FOR PORTIONS OF ALBERTA REMAIN THIS MORNING.

OUTLOOK...COLD THROUGH MIDWEEK AS THE RIDGE DOMINATES WEATHER OVER THE PRAIRIES FOR A COUPLE OF DAYS.

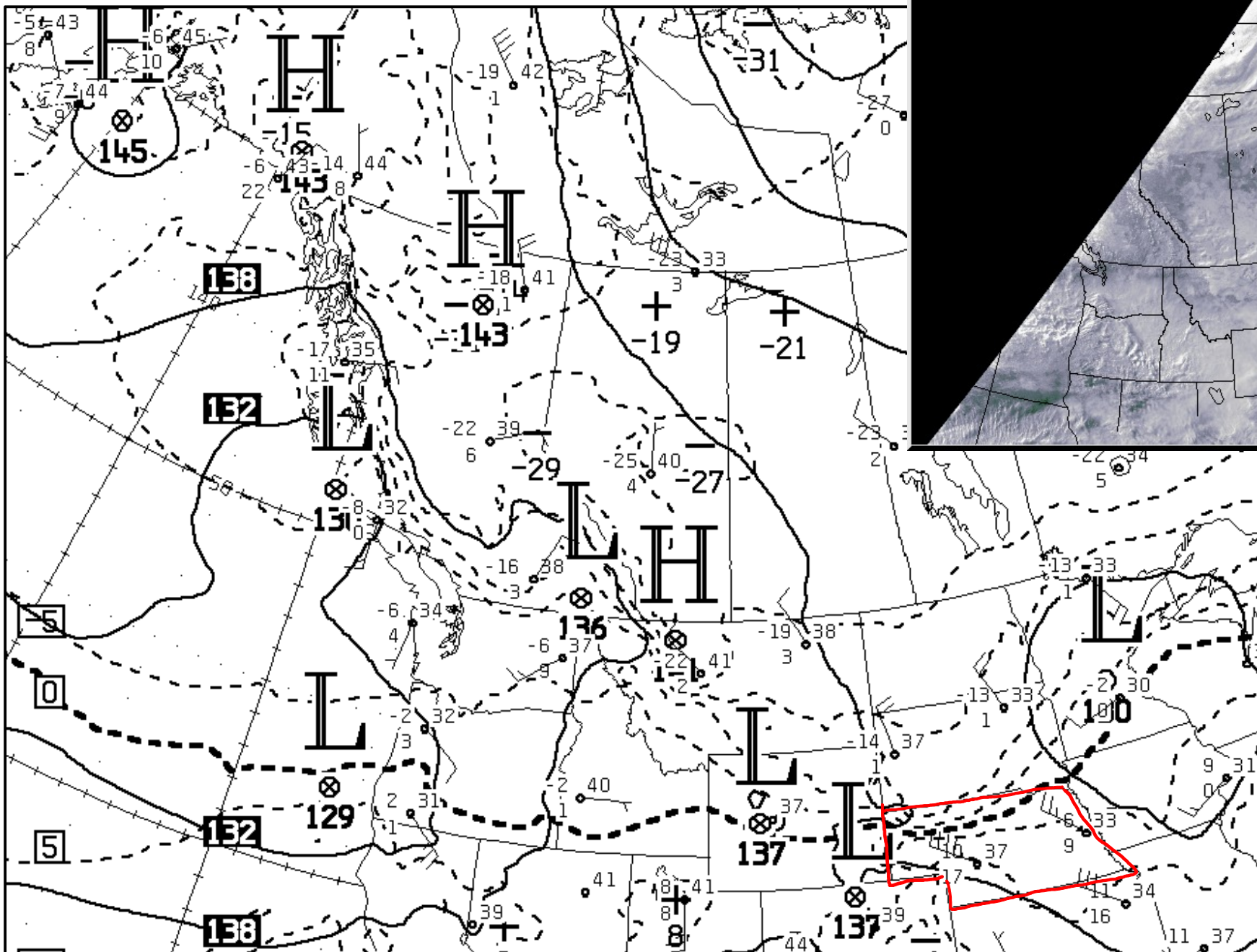
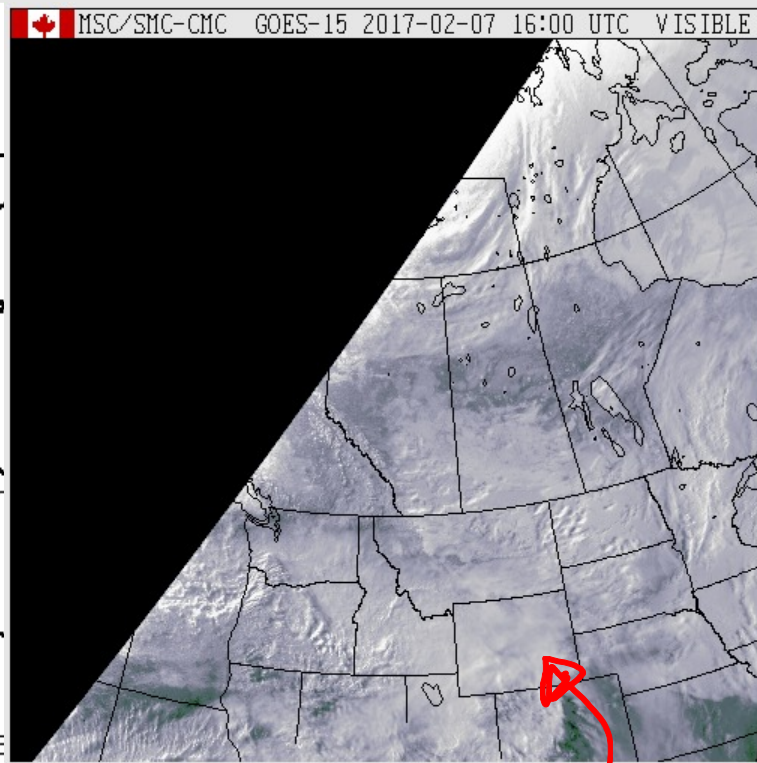


Handwritten notes in orange ink on the right side of the chart, including the word 'VALLEY' and several vertical lines of scribbles.

CMC surface analysis 12Z Tues 7 February 2017...



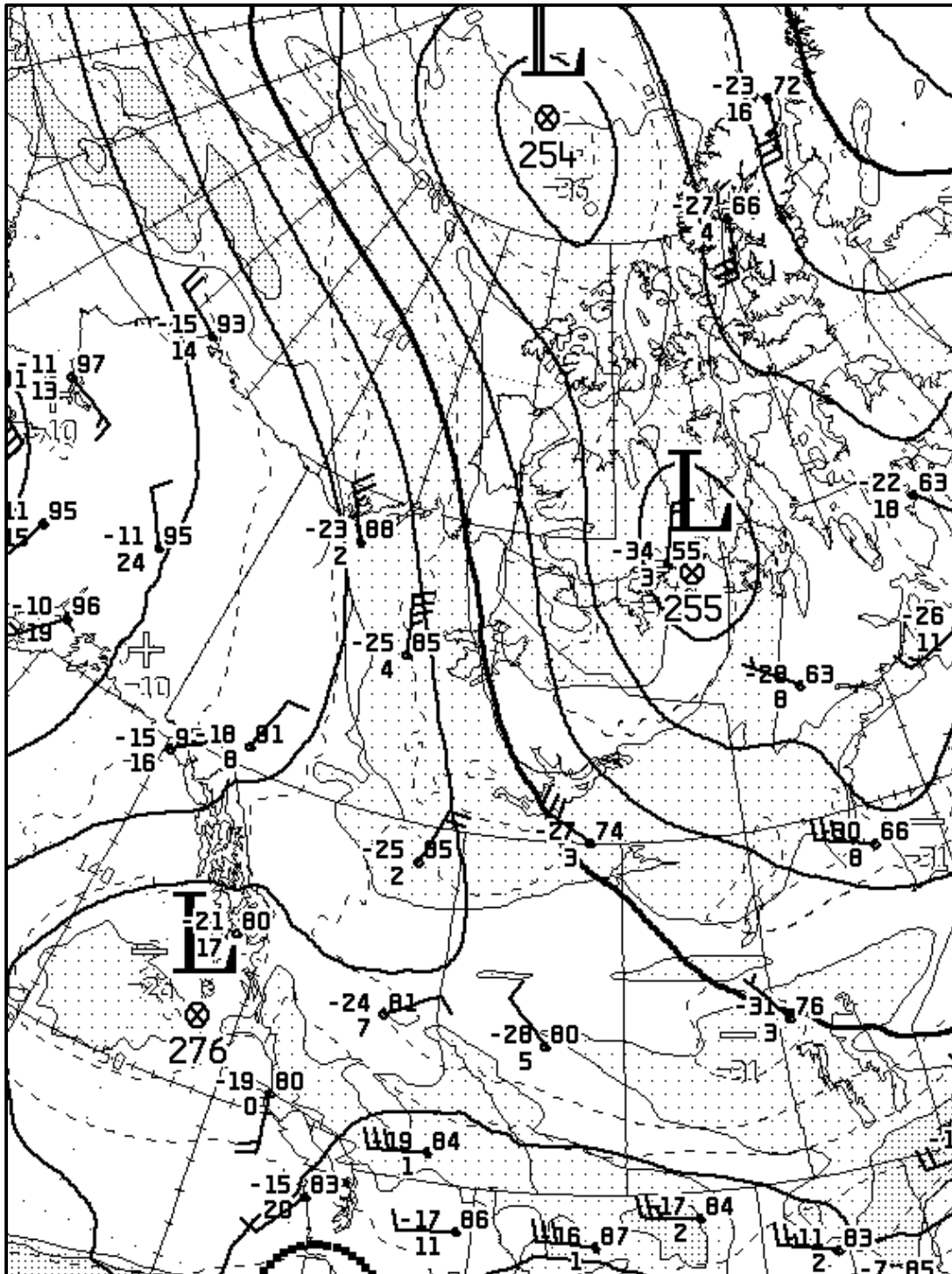
CMC 850 hPa analysis 12Z Tues 7 February 2017...



animation showed some low cloud

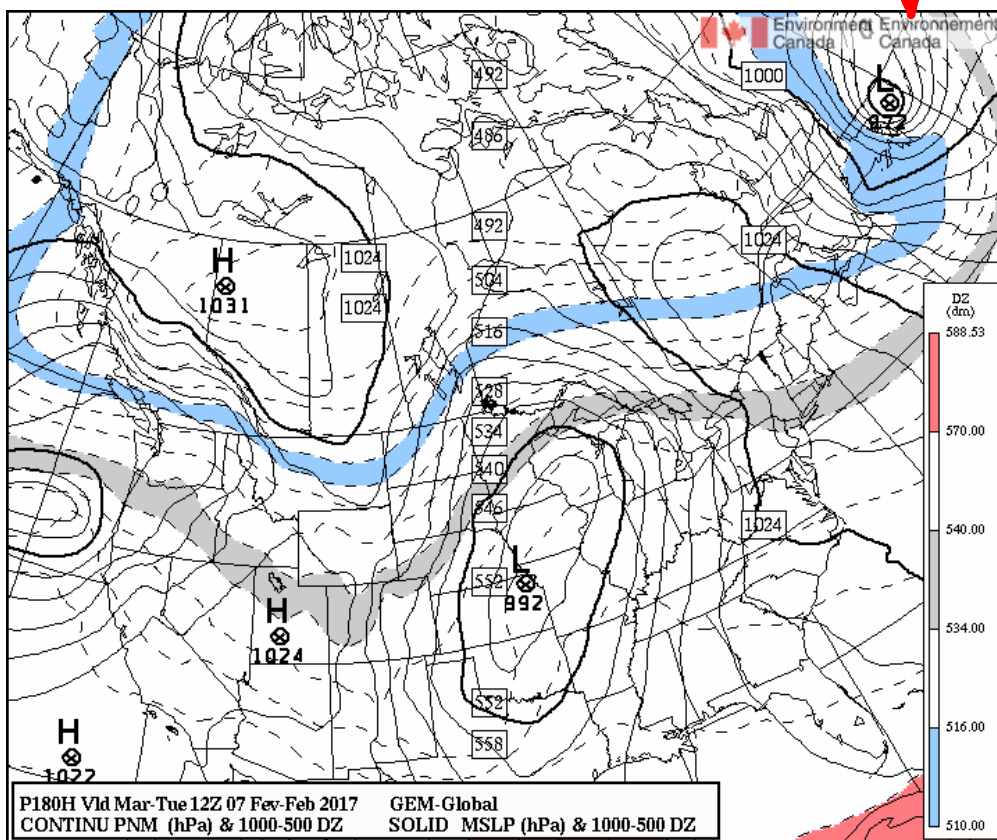
Huge temp. gradient in Nebraska

CMC 700 hPa analysis 12Z Tues 7 February 2017...

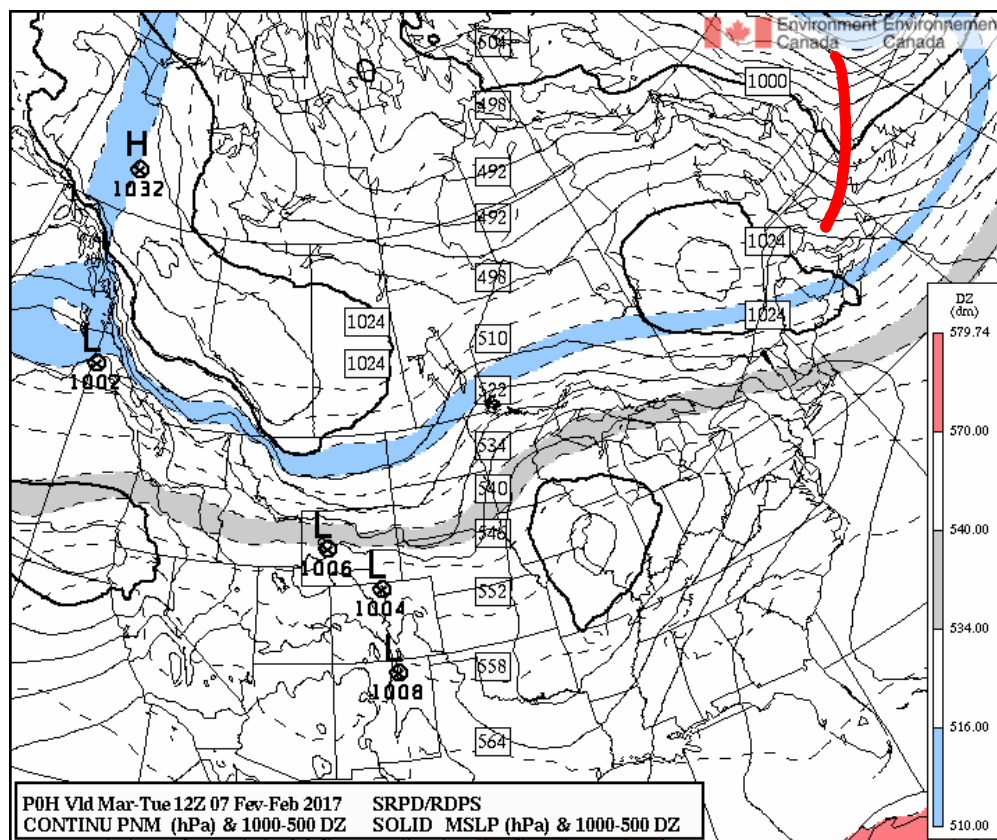


no stippling $\Rightarrow T - T_d > 5^\circ\text{C}$

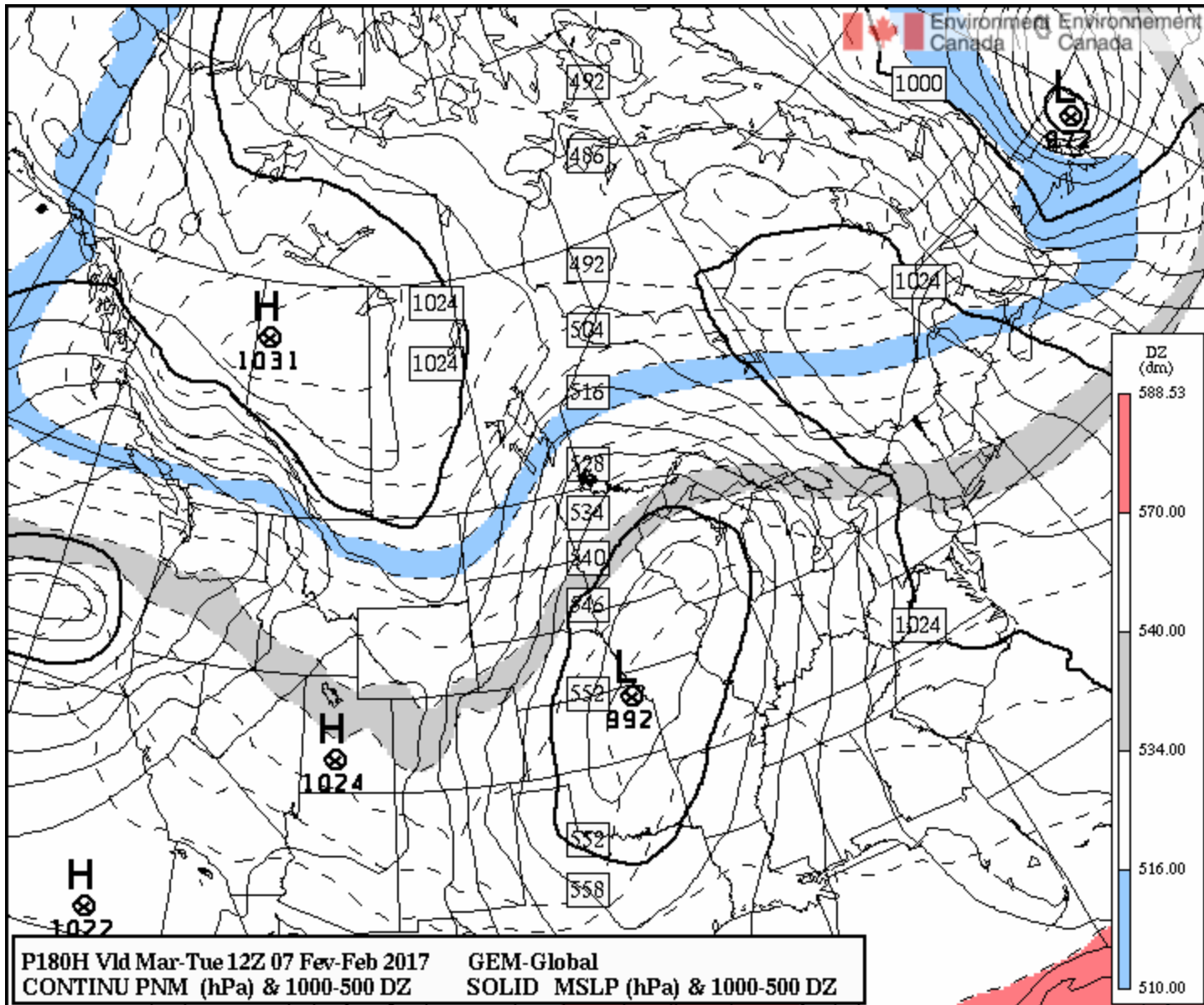
Comparing GEM GDPS 180h forecast and RDPS 0h fcst, both valid 12Z Tues 7 Feb. 2017

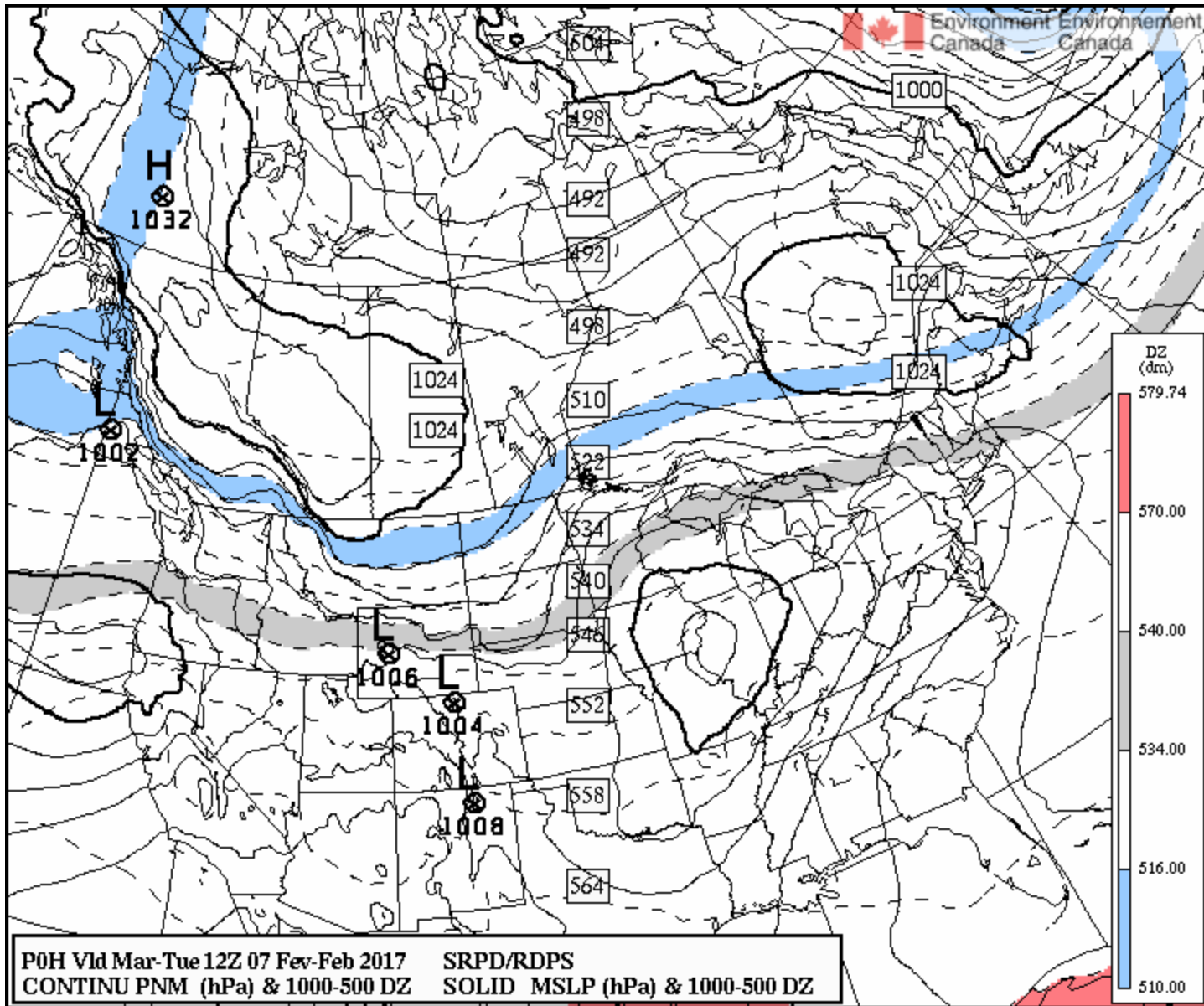


vs

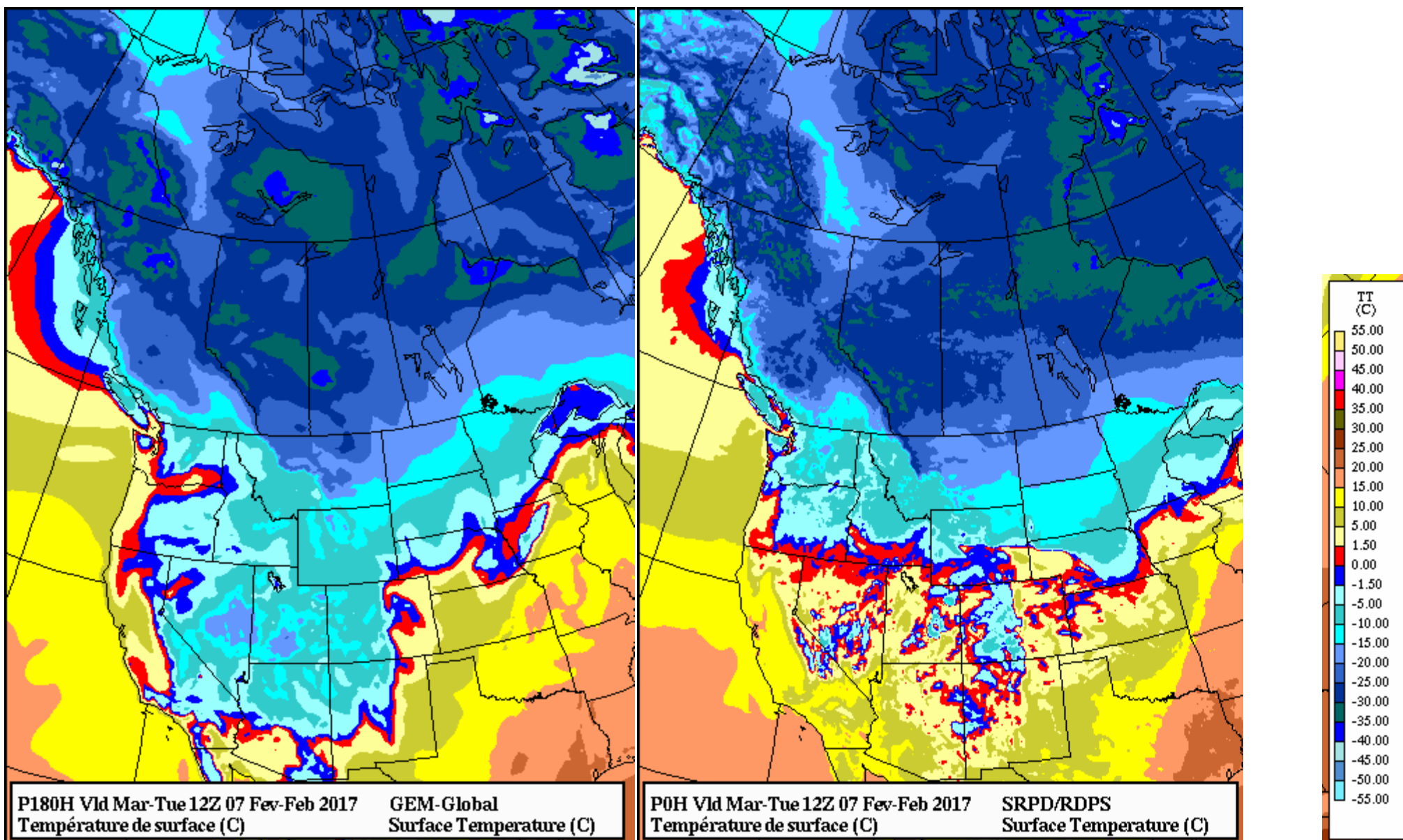


GEM GDPS 180h forecast valid 12Z Tues 7 Feb. 2017





Comparing GEM GDPS 180h forecast and RDPS 0h fcst, both valid 12Z Tues 7 Feb. 2017



2017-02-07 08:32:00

