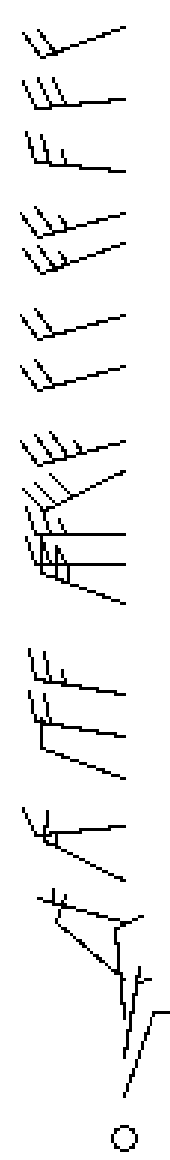
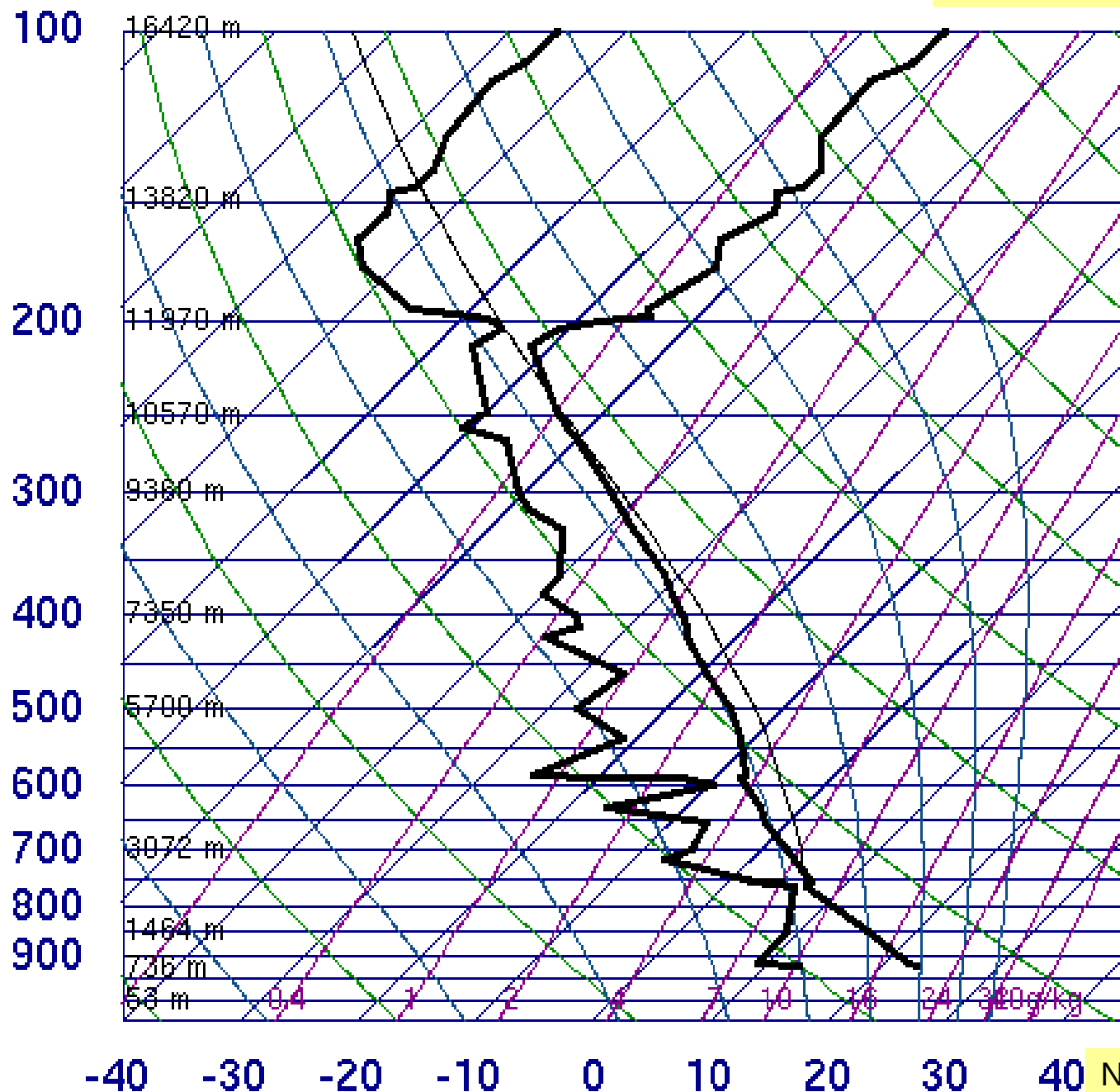




# 71119 WSE Edmonton Stony Plain

Find the LCL and LFC  
Shade in the area representing CAPE



SLAT	53.53
SLON	-114.10
SELV	766.0
SHOW	-2.51
LIFT	-2.09
LFTV	-2.43
SWET	233.9
KINX	31.50
CTOT	23.50
VTOT	30.50
TOTL	54.00
CAPE	536.2
CAPV	614.2
CINS	-1.93
CINV	-1.54
EQLV	237.7
EQTV	237.5
LFCT	738.8
LFCV	751.6
BRCH	226.9
BRCV	260.0
LCLT	280.0
LCLP	760.7
MLTH	302.8
MLMR	8.29
THCK	5647.
PWAT	21.59

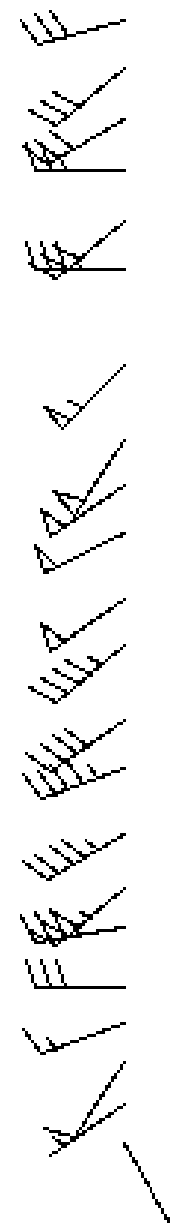
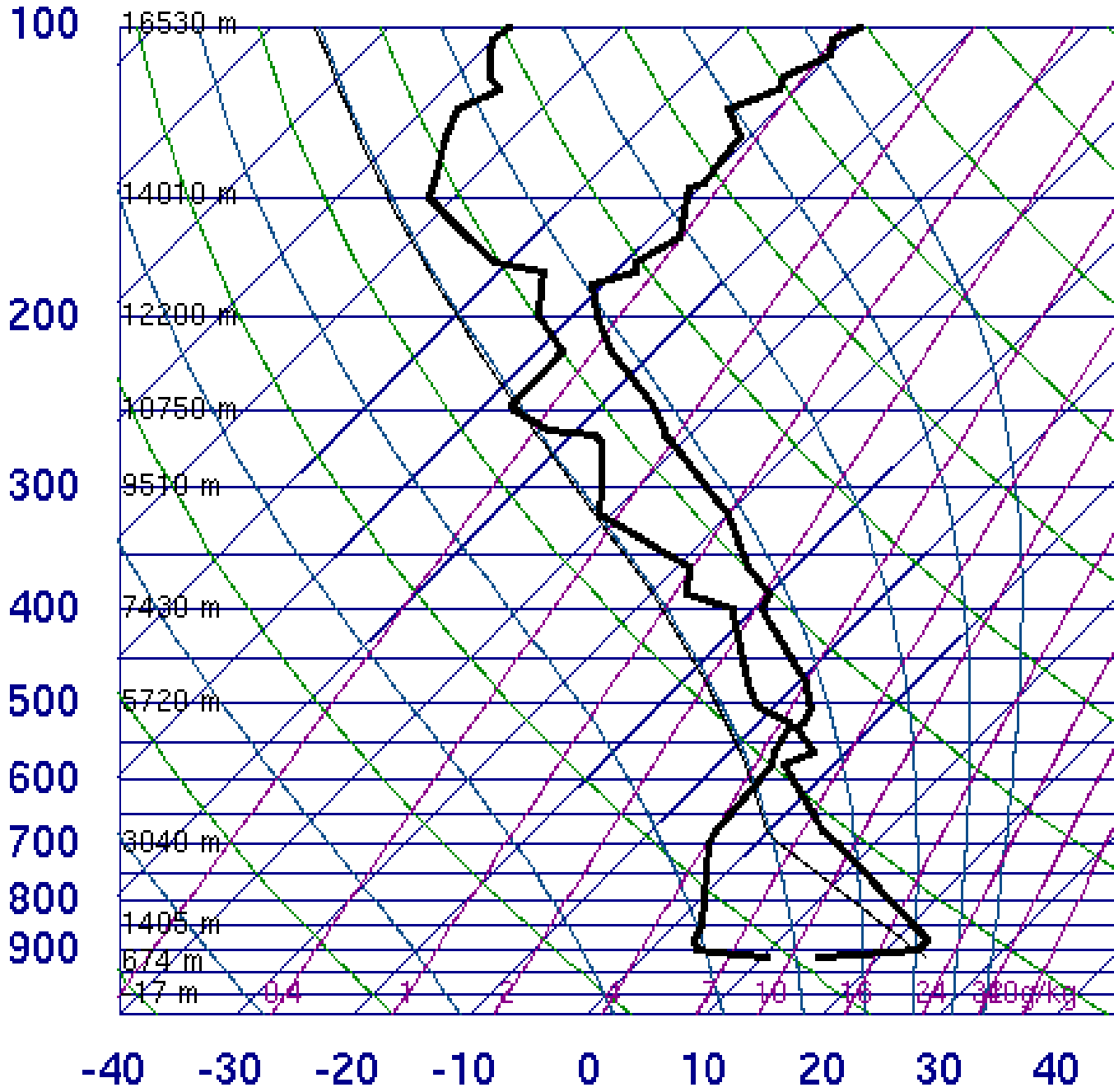
Notice the well-mixed layer based on ground – sounding data given over

00Z 11 Aug 2011

University of Wyoming

Where is the tropopause?

# 71119 WSE Edmonton Stony Plain



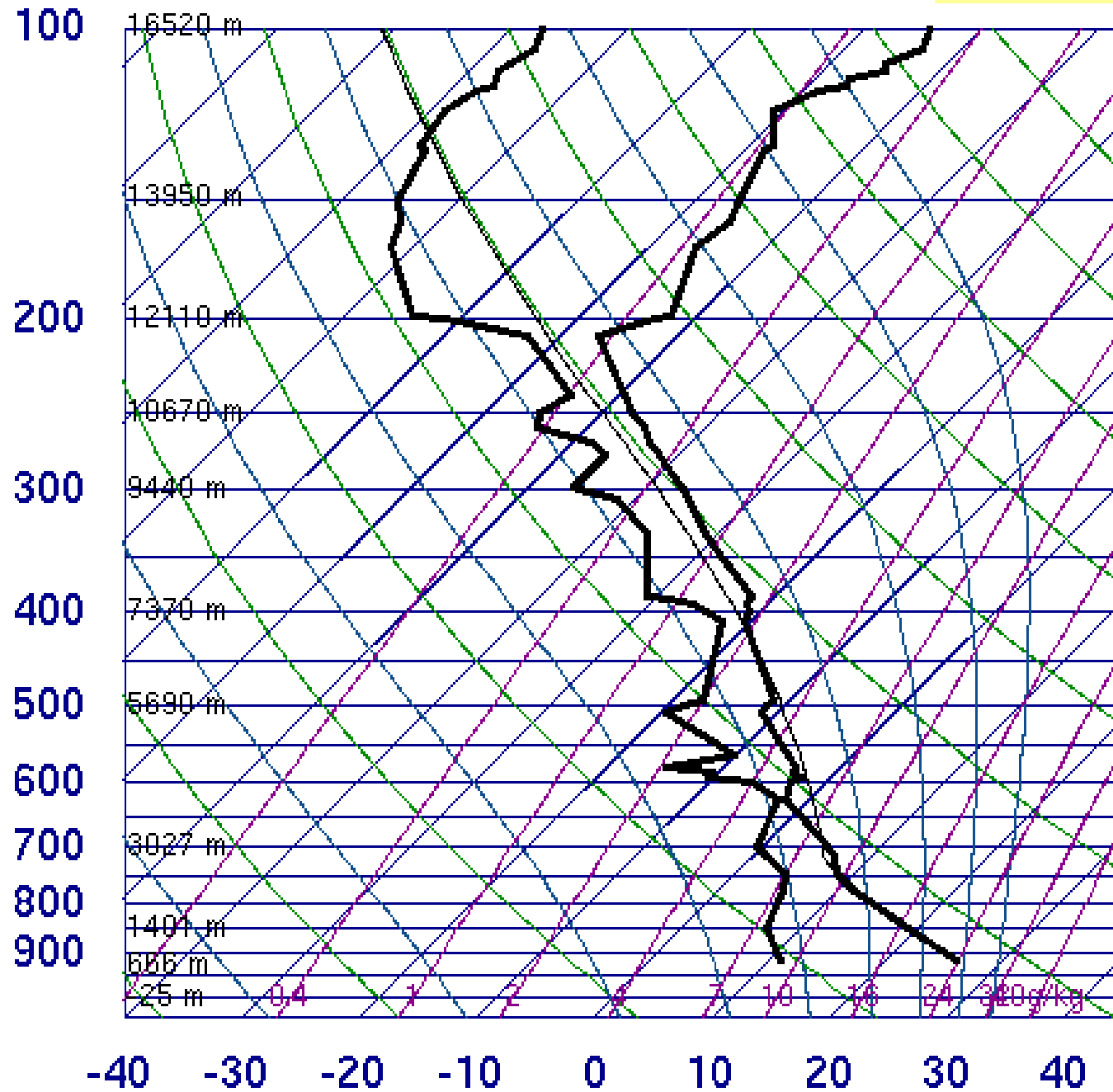
SLAT	53.53
SLOE	-114.10
SELV	766.0
SHOW	7.08
LIFT	7.81
LFTV	7.94
SWET	77.39
KINX	18.70
CTOT	9.50
VTOT	27.50
TOTL	37.00
CAPE	0.00
CAPV	0.00
CINS	0.00
CINV	0.00
EQLV	-9999
EQTV	-9999
LFCT	-9999
LFCV	-9999
BRCH	0.00
BRCV	0.00
LCLT	273.5
LCLP	685.3
MLTH	304.7
MLMR	5.83
THCK	5737.
PWAT	22.85

12Z 22 Aug 2011

University of Wyoming

# 71119 WSE Edmonton Stony Plain

Find the LCL and LFC  
Shade in the area representing CAPE



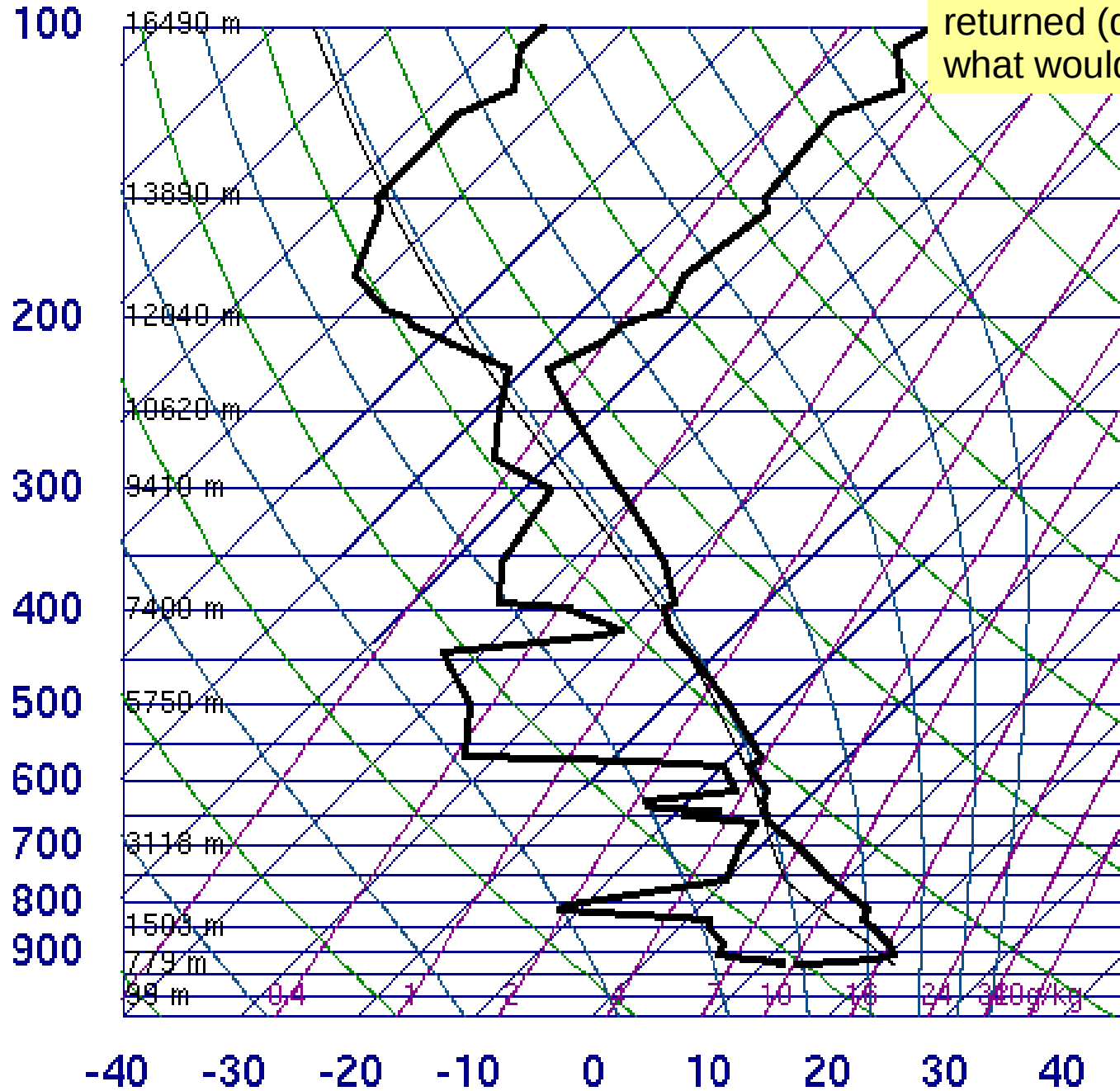
SLAT	53.53
SLON	-114.10
SELV	766.0
SHOW	0.11
LIFT	-1.34
LFTV	-1.62
SWET	149.4
KINX	31.90
CTOT	18.70
VTOT	30.70
TOTL	49.40
CAPE	147.3
CAPV	191.5
CINS	-14.3
CINV	-6.57
EQLV	425.9
EQTV	424.4
LFCT	684.9
LFCV	696.5
BRCH	2.80
BRCV	3.64
LCLT	279.6
LCLP	724.5
MLTH	306.6
MLMR	8.47
THCK	5715.
PWAT	26.46

00Z 23 Aug 2011

University of Wyoming

# 71119 WSE Edmonton Stony Plain

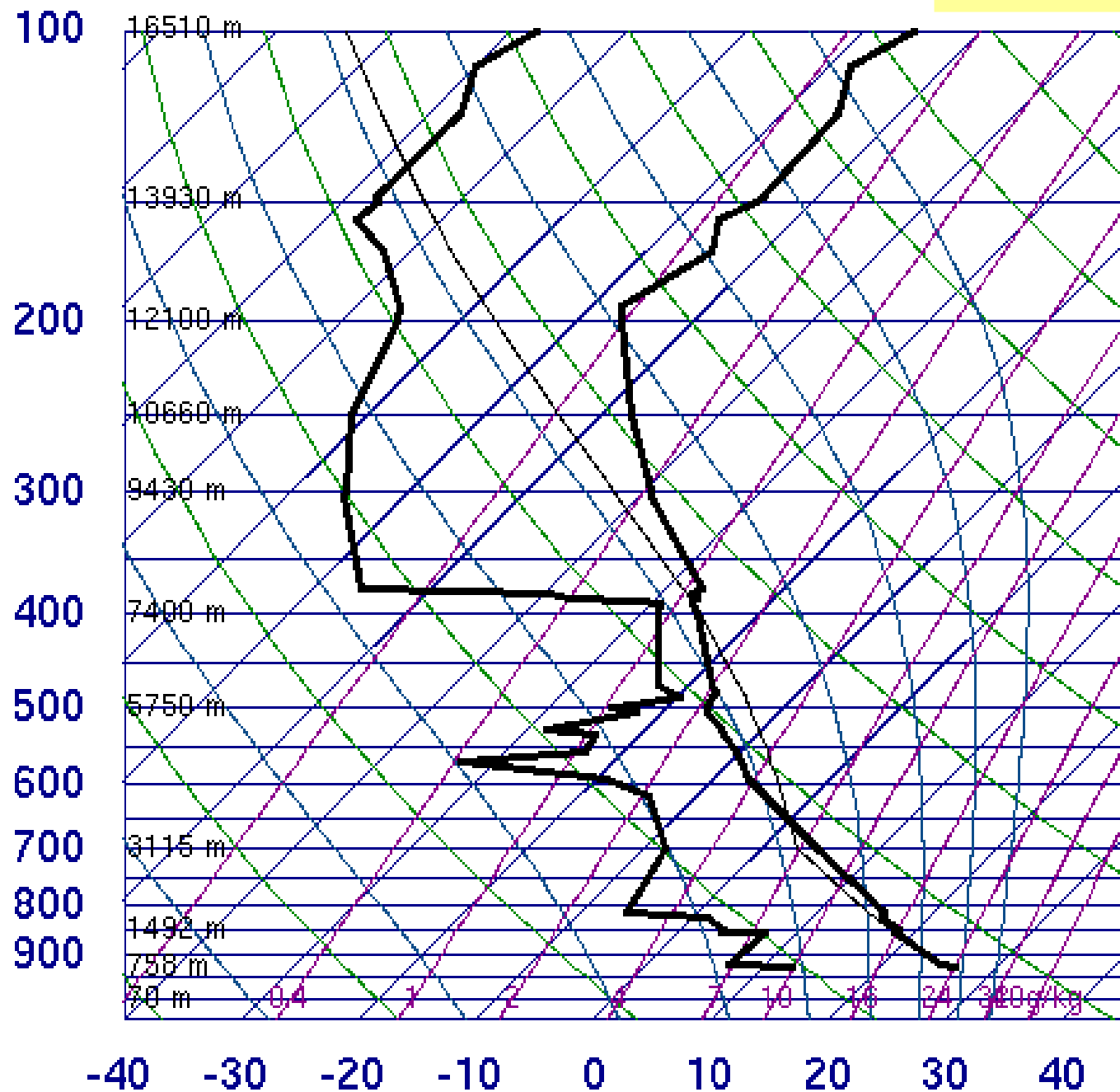
If a surface parcel were lifted moist adiabatically to the 500 hPa level, then returned (dry) adiabatically to 700 hPa, what would its final temperature be?



	SEON	-114.10
	SELV	766.0
	SHOW	1.85
	LIFT	0.95
	LFTV	0.64
	SWET	72.82
	KINX	28.70
	CTOT	17.10
	VTOT	31.10
	TOTL	48.20
	CAPE	1.45
	CAPV	2.94
	CINS	-323.
	CINV	-263.
	EQLV	412.5
	EQTV	410.7
	LFCT	430.6
	LFCV	440.4
	BRCH	0.08
	BRCV	0.16
	LCLT	277.1
	LCLP	750.2
	MLTH	300.8
	MLMR	6.92
	THCK	5651.
	PWAT	17.12

# 71119 WSE Edmonton Stony Plain

Find the LCL and LFC  
Shade in the area representing CAPE



SLAT	53.53
SLON	-114.10
SELV	766.0
SHOW	-2.05
LIFT	-3.65
LFTV	-3.94
SWET	210.1
KINX	25.70
CTOT	20.10
VTOT	35.10
TOTL	55.20
CAPE	277.9
CAPV	324.5
CINS	-109.
CINV	-65.2
EQLV	394.3
EQTV	390.0
LFCT	654.3
LFCV	669.3
BRCH	4.19
BRCV	4.89
LCLT	277.0
LCLP	713.6
MLTH	305.0
MLMR	7.14
THCK	5680.
PWAT	15.63

00Z 28 Aug 2011

University of Wyoming