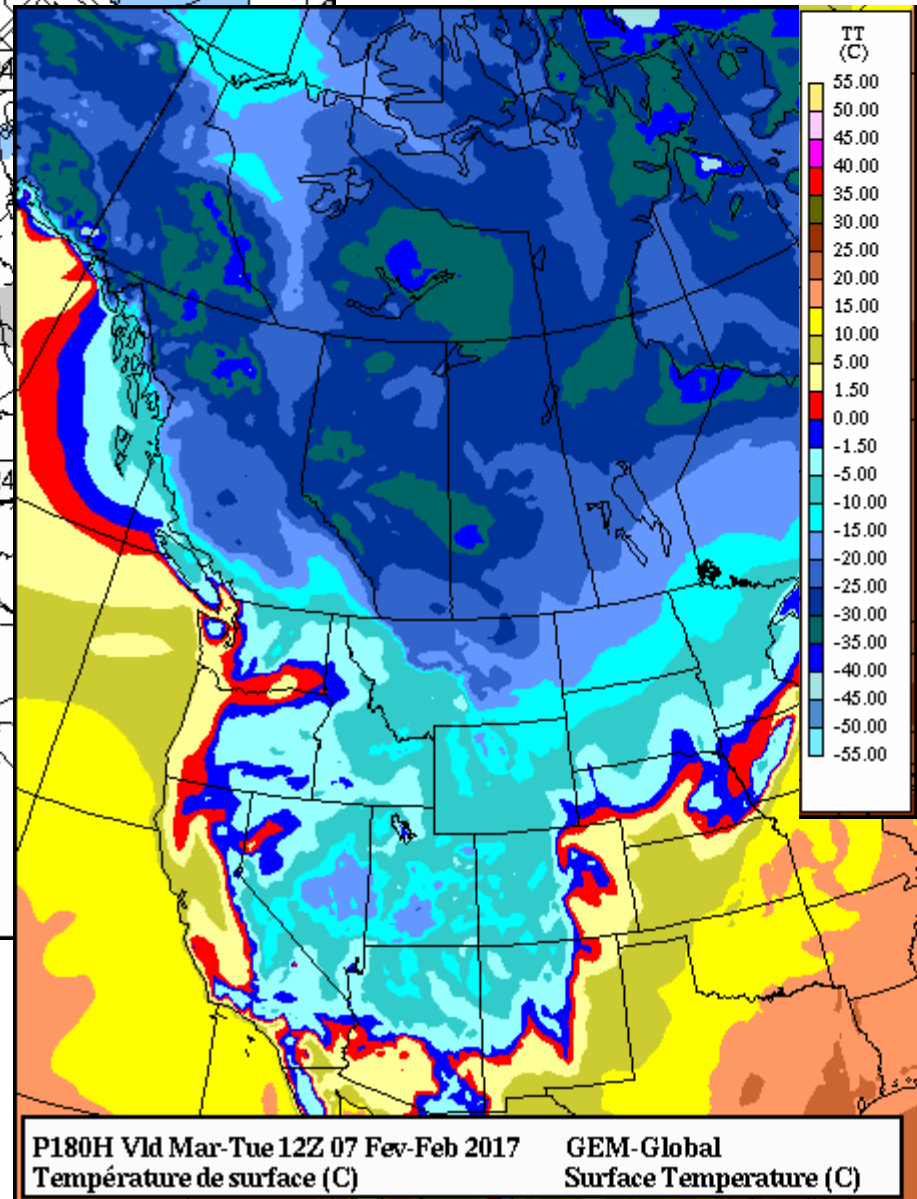
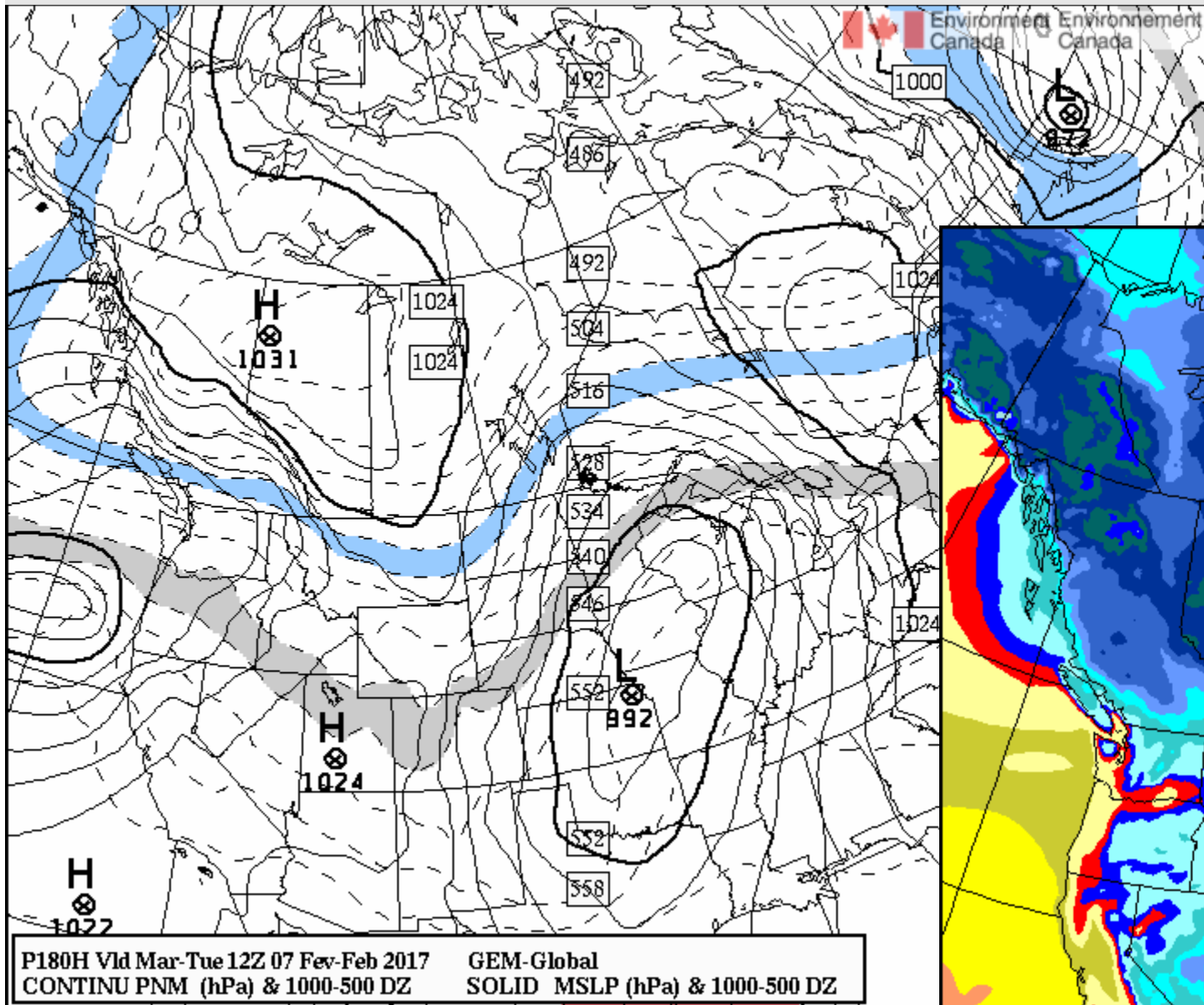
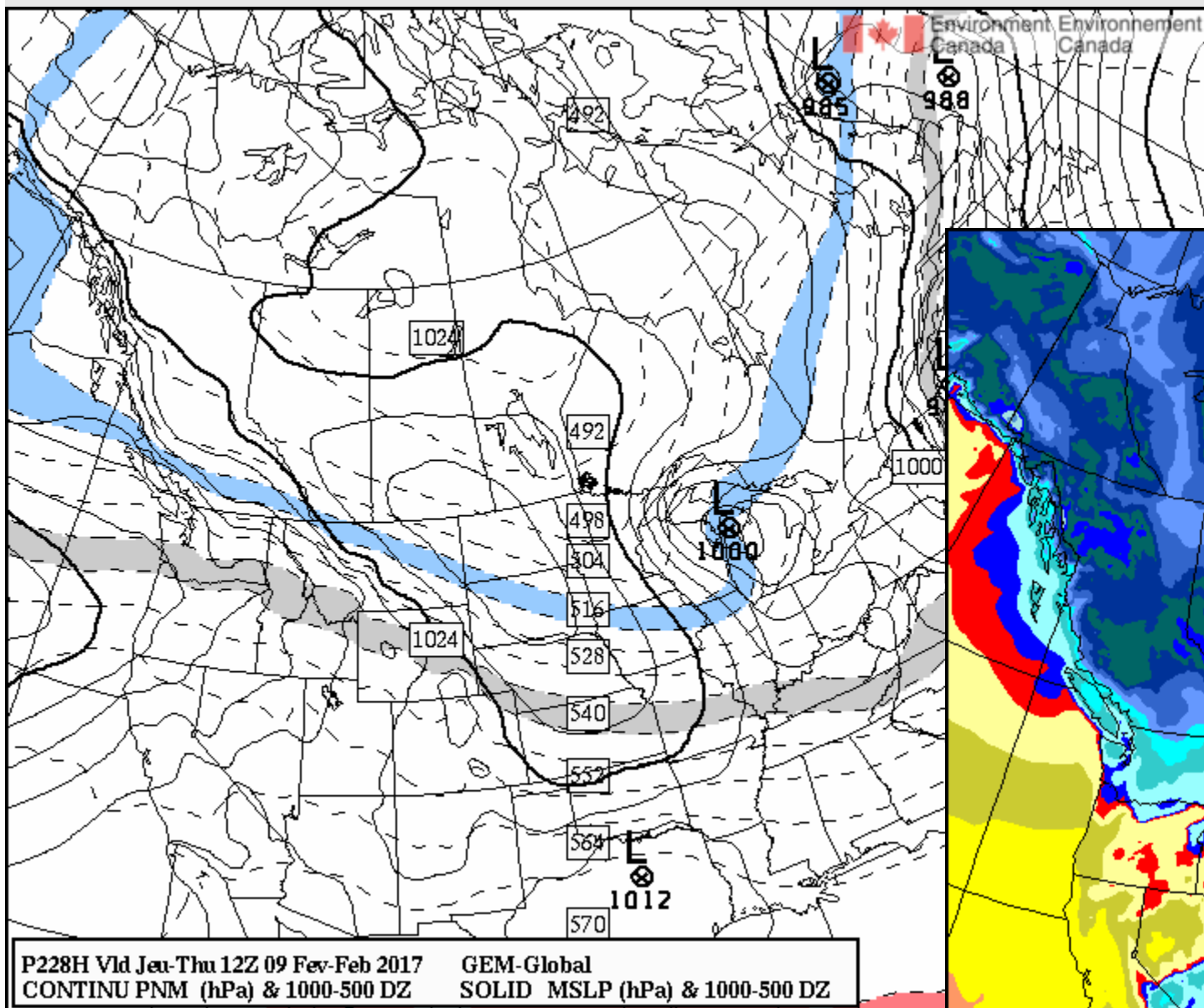


GEM GDPS 180h forecast initialized 00Z Tues 31 Jan. valid 12Z Tuesday 7 February 2017

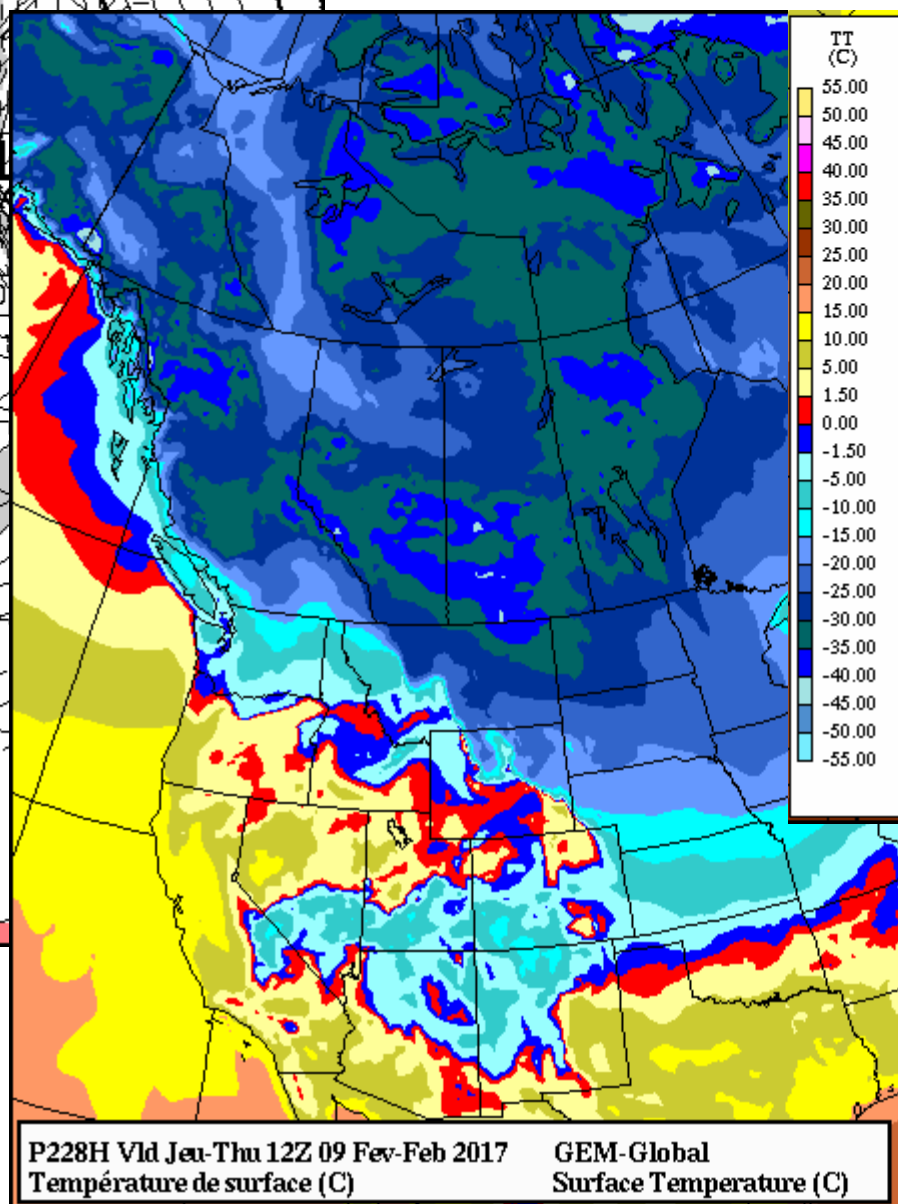


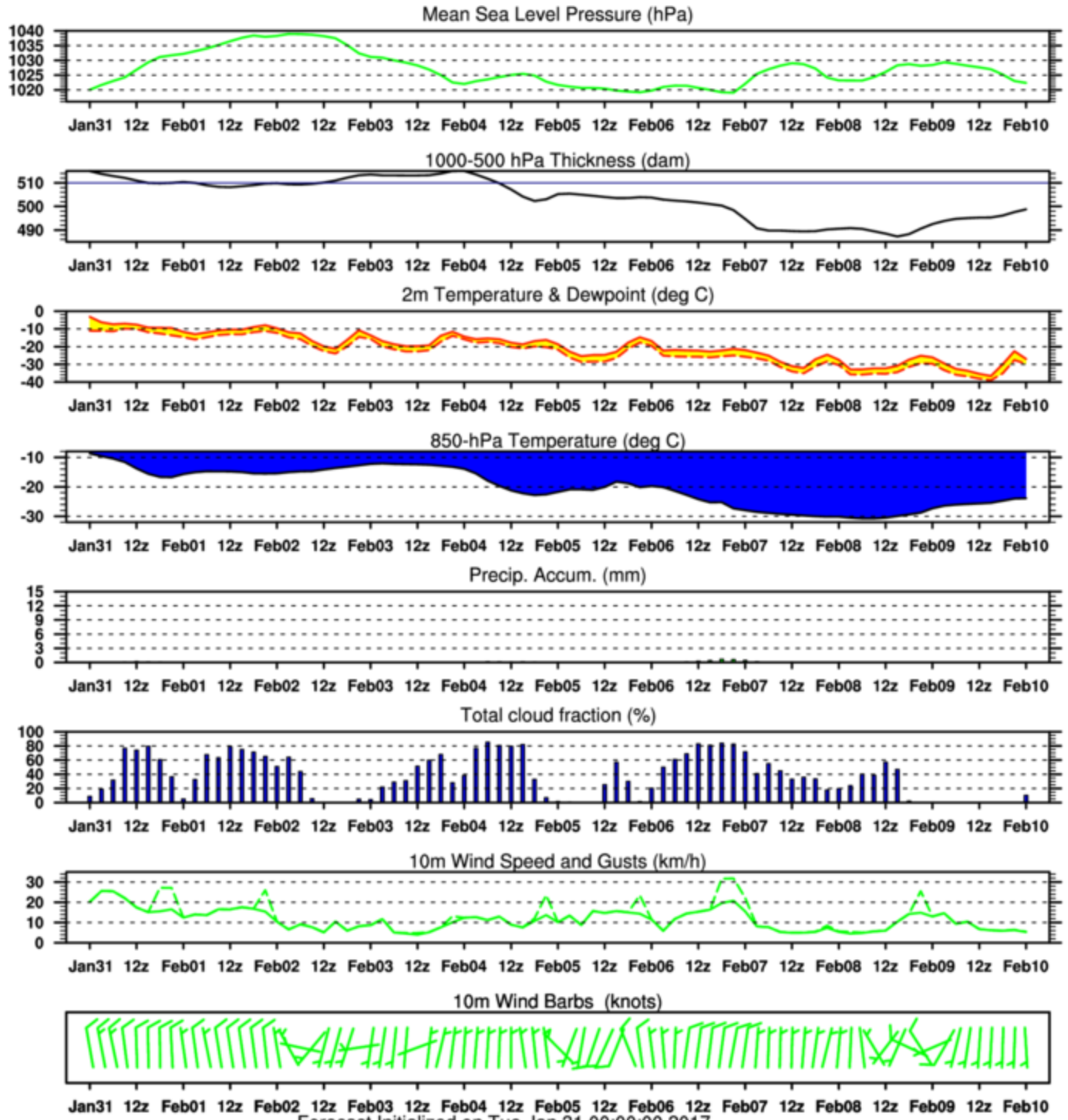
- patches of -30° to -35°C in C. Alberta

GEM GDPS 228h forecast initialized 00Z Tues 31 Jan. valid 12Z Thurs 9 February 2017



- patches of -35° to -40°C in C. Alberta



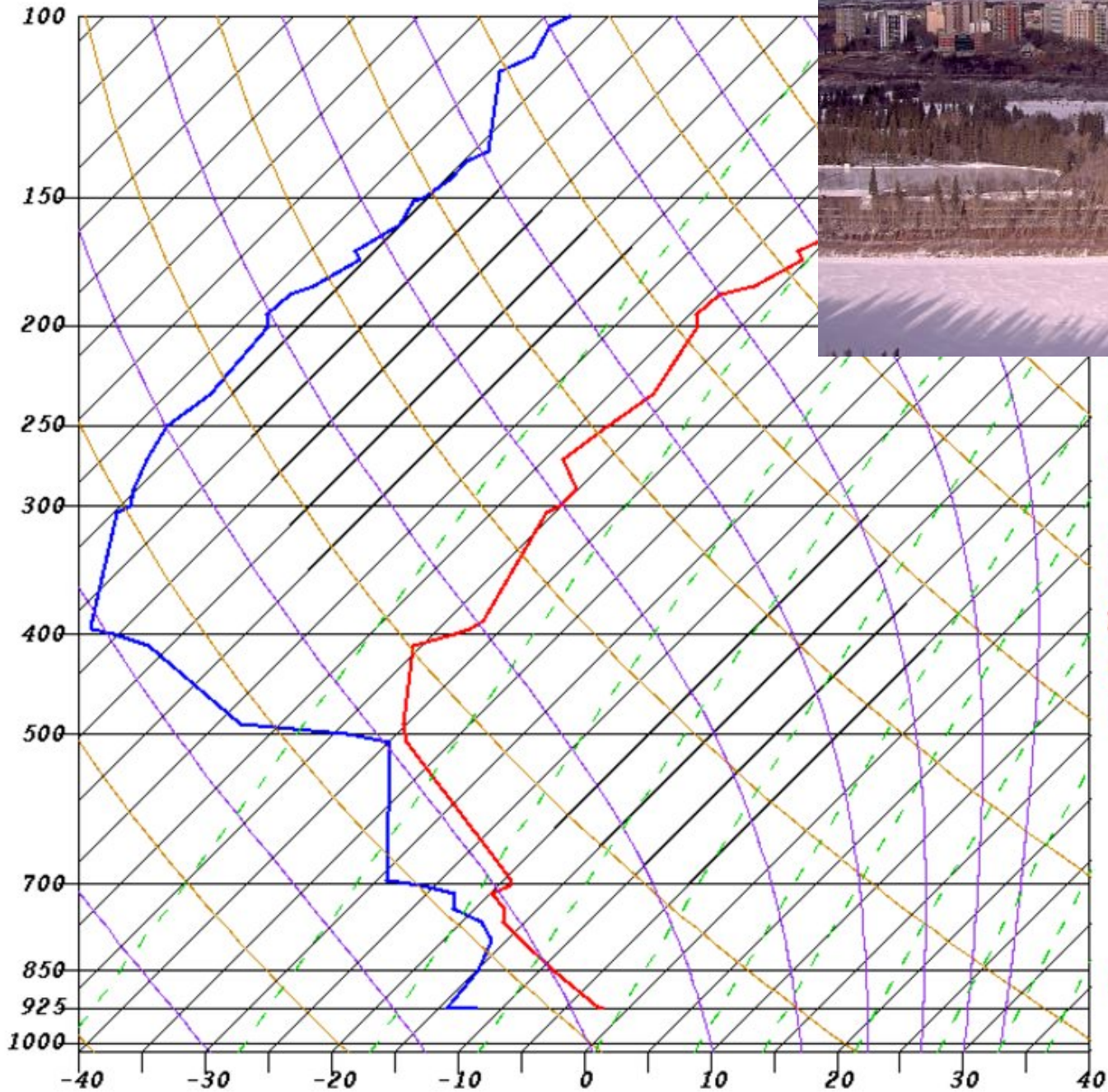


Forecast Initialized on Tue Jan 31 00:00:00 2017
 CMC-GDPS for the City of Edmonton - <http://meteocentre.com/>

Yesterday afternoon was sunny, dry and windy – what feature of the sounding reflects that state?

170131/0000 71119 WSE SHOW: 4 LIFT: 4
CAPE: 0 EQLV: -9999
LCLT: 259 LCLP: 792

4 pm MST Monday 30 Jan. 2017



Handwritten notes in orange ink on the right side of the chart, including the word "inversion" and other illegible scribbles.